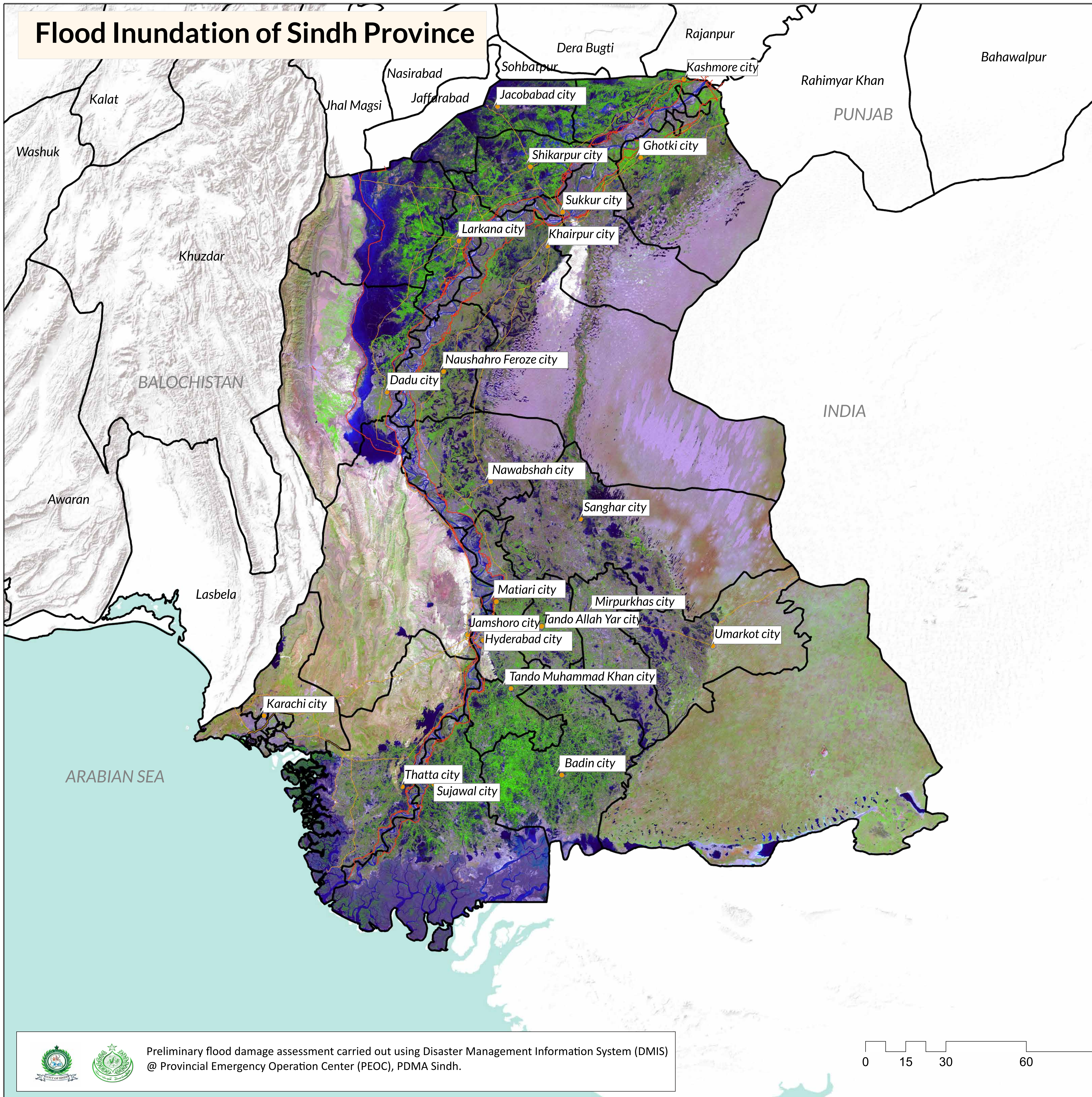


Flood Inundation of Sindh Province

N



S.no	District	Total Area in Sq.Km	Previous Inundation in Sq.Km (08/10/2022)	Previous Inundation in Sq.Km (15/10/2022)
1	Kashmore	2,549.03	444.71	457.78
2	Jacobabad	2,769.36	899.13	851.73
3	Shikarpur	2,576.89	607.41	569.45
4	Larkana	1,906.34	392.05	338.99
5	Kamber Shahdadkot	5,596.44	1,856.88	1,628.46
6	Dadu	8,032	1,424.46	1,346.05
7	Naushahro Feroze	3,025.48	477.95	454.85
8	SBA	4,615.16	564.17	502.02
9	Sanghar	10,259.02	686.54	779.44
10	Jamshoro	11,250.32	606.7	562.36
11	Hyderabad	1,021.54	95.98	100.38
12	Matiari	1,458.04	176.47	184.27
13	Tando Allah Yar	1,572.86	93.36	122.26
14	Tando Muhammad Khan	1,813	115.19	123.55
15	Badin	6,470	587.51	590.71
16	Sujawal	8,699.20	1,454.56	1,488.20
17	Thatta	7,704	1,060.74	1,089.96
18	Sukkur	5,212.05	277.389	261.56
19	Khairpur	15,925.04	727.41	697.65
20	Ghotki	6,506.18	244.61	256.71
21	Mirpurkhas	3,319.16	322.88	272.53
22	Umerkot	5,502.92	322.13	289.83
Total		117,784.49	13,438.23	12,968.74

Disclaimer: 15m resolution satellite Images has been used for preliminary damage assessment and depicts status of flood inundation as of image acquisition date.

Source: Landsat 9 Collection 2, 15 October 5: 56 GMT

- Major Cities
- District_Boundary
- Highway/Motorway
- Embankments



Source: Esri, USGS, NOAA